



NOBU | PRIVATE DINING | [EXPLORE >](#)

NOBU HOTEL
LONDON PORTMAN SQUARE



NOBU PRIVATE DINING ROOM

Nobu Hotel London Portman Square's Private Dining Room offers an exclusive and elevated dining space, whilst sitting separately from the main restaurant.

Founded by Chef Nobu Matsuhisa, our dining offers Japanese cuisine with a Peruvian influence, resulting in an unforgettable culinary experience. The Nobu Private Dining Room is an extension of this excellence offered in the Nobu Restaurant, providing an intimate and personalised setting for guests seeking a unique dining experience.

THE NOBU PRIVATE DINING ROOM

Our Private Dining Rooms have been thoughtfully curated to offer an intimate, exclusive setting that doesn't compromise the world-class Nobu experience. Designed for versatility, the two spaces can be arranged in a variety of ways, with the flexibility to combine them for larger gatherings of up to 90 guests.

Our dedicated Private Dining Team offers a diverse range of exceptional dining options to suit any occasion, from elegant breakfasts and refined afternoon teas to whimsical children's parties. Of course, we also feature our signature omakase tasting menus and sophisticated canapé receptions.

Located beside the main restaurant, these modern spaces are separated by sleek curtains rather than solid walls, preserving the iconic Nobu ambiance that flows seamlessly between the areas.



SAMPLE MENUS

CANAPÉ MENU

Two pieces of each, per person
Avocado & Corn Tacos
–
Salmon with Anticucho
–
Chicken Karaage with
Creamy Amarillo
–
Crispy Rice with Spicy Avocado
–
Salmon Sashimi, Karashi Sumiso
–
Yellowtail Jalapeno
–
Tofu & Tomato New Style

LUNCH MENU

Edamame
–
Tuna Sashimi Salad
Matsuhisa Dressing
–
Assorted Sushi
–
Salmon Shiso Salsa
–
Seared Beef Tenderloin with
Teriyaki
–
Suntory Whiskey Cappuccino

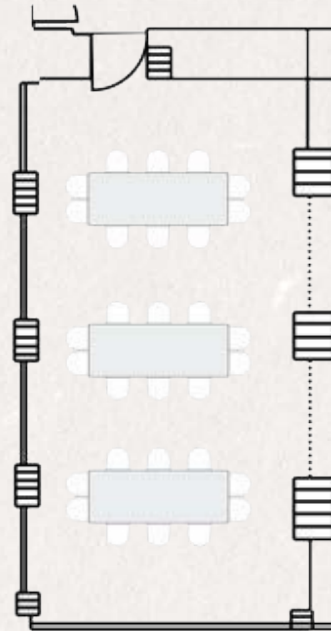
DINNER MENU

Edamame
–
Yellowtail Jalapeno with Caviar
–
Salmon Salad with Matsuhisa
Dressing
–
Assorted Nobu Sushi
–
Black Cod Miso
–
Beef Tenderloin 100g with
Anticucho Sauce
–
One Choice From
The Dessert Selection

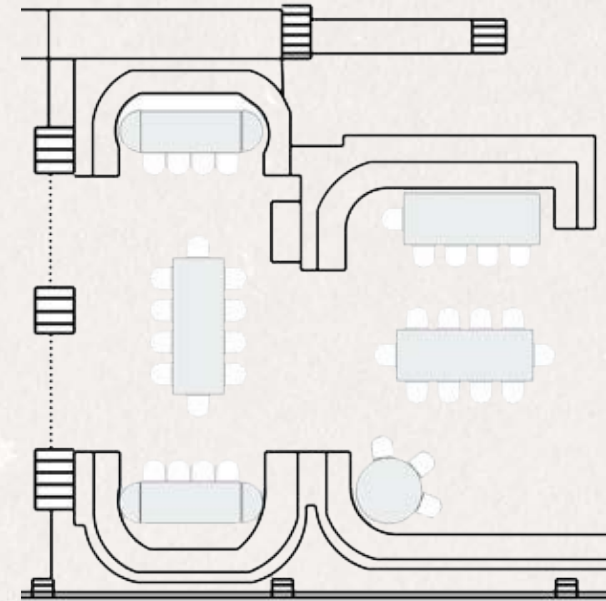
Here at Nobu Hotel London Portman Square, we have one of the Top 50 Sommeliers in London working with us who will be on hand to select a choice of wines based on your menu preference.

FLOORPLANS

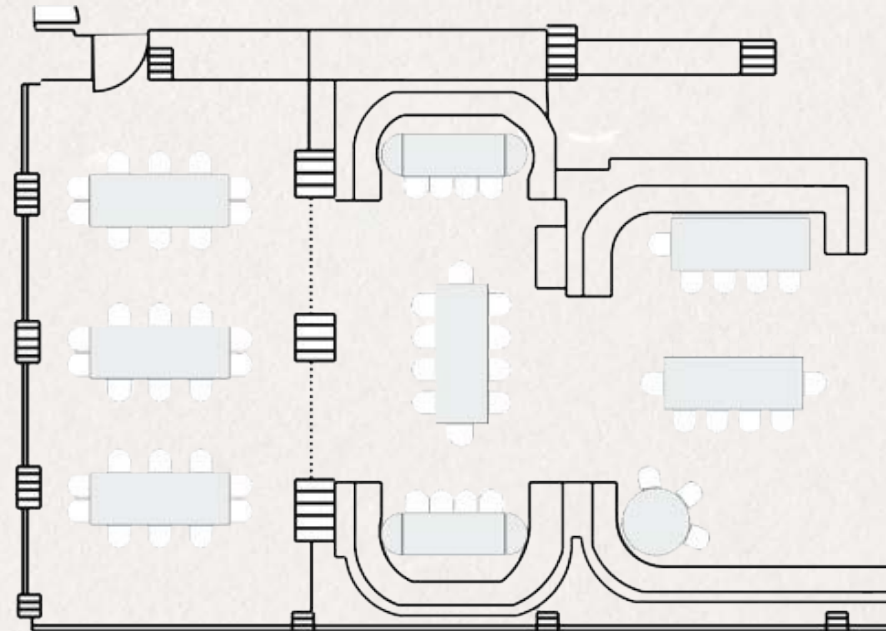
PDR 1

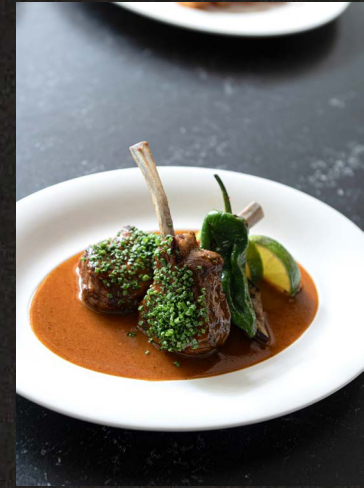


PDR 2



PDR 1&2







SPECIAL OCCASIONS

For your special occasions, our private dining room is now available for exclusive bookings, including festive gatherings, elegant afternoon teas, and fun-filled children's parties.

NOBU HOTEL
LONDON PORTMAN SQUARE

To enquire about hosting a dinner with us please fill
in an enquiry form at the bottom of our webpage ***here***

Nobu Hotel London Portman Square
22 Portman Square, London W1H 7BG
Nobuhotels.com/Londonportmansquare